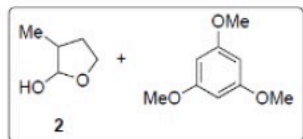
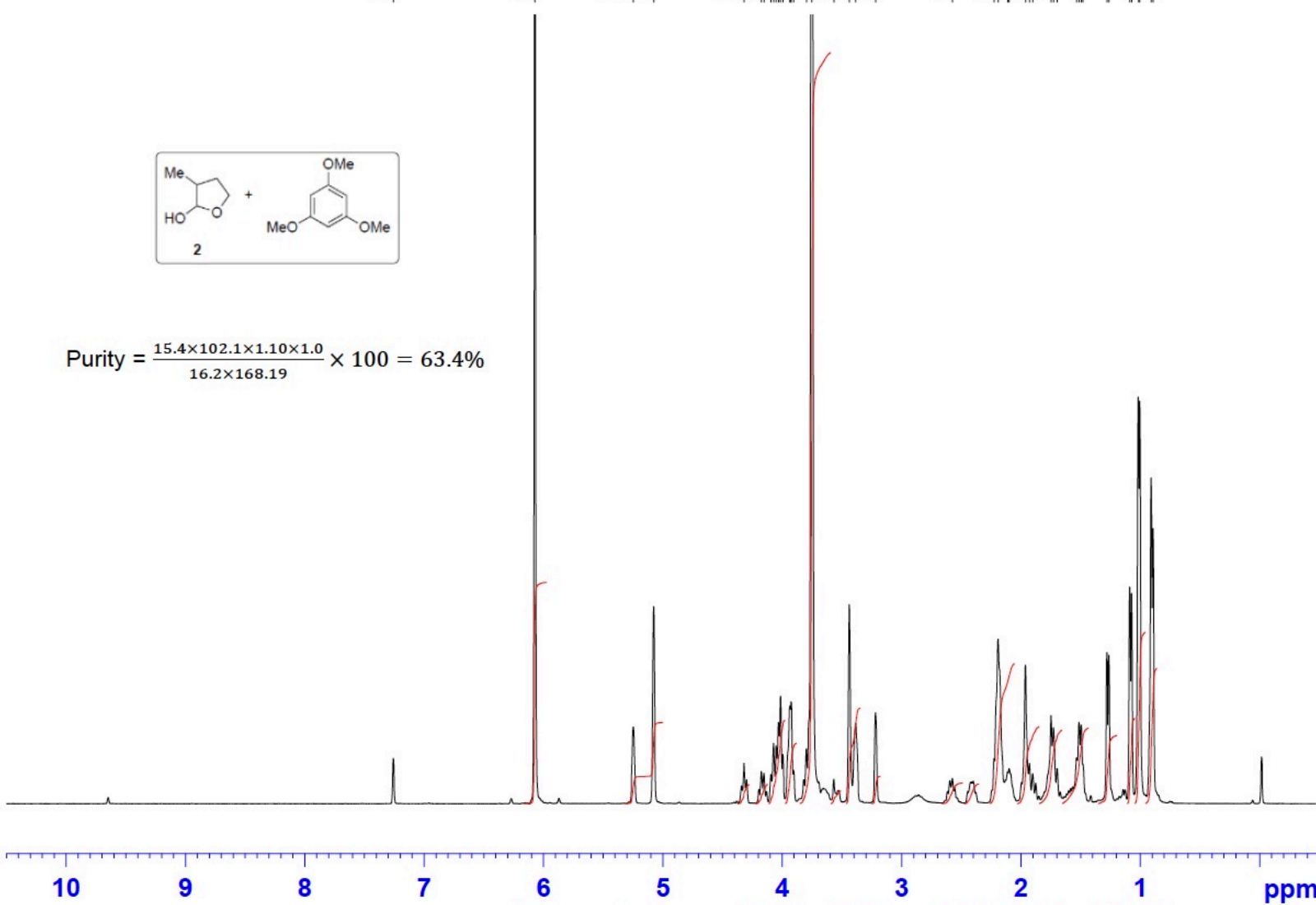


7.258
6.072
5.247
5.077
4.319
4.174
4.152
4.094
4.073
4.050
4.030
4.014
3.994
3.937
3.933
3.925
3.904
3.798
3.751
3.567
3.438
3.385
3.217
2.574
2.225
2.191
2.111
2.099
1.963
1.928
1.901
1.747
1.726
1.696
1.533
1.513
1.495
1.481
1.279
1.262
1.088
1.072
1.016
1.003
0.908
0.893



$$\text{Purity} = \frac{15.4 \times 102.1 \times 1.10 \times 1.0}{16.2 \times 168.19} \times 100 = 63.4\%$$



3.00
1.10
0.26
0.26
1.13
0.82
10.18
0.17
1.30
0.37
0.28
0.27
1.90
1.05
1.00
1.02
0.93
1.16
2.33
1.84

Current Data Parameters
NAME OS3A
EXPNO 1
PROCNO 1

F2 - Acquisition Parameters

Date_ 20230630
Time_ 10.41 h
INSTRUM Avance Neo 400MHz
PROBHD Z163739_0558 (
PULPROG zg30
TD 65536
SOLVENT CDCl3
NS 16
DS 2
SWH 8196.722 Hz
FIDRES 0.250144 Hz
AQ 3.9976959 sec
RG 45.2
DW 61.000 usec
DE 13.89 usec
TE 298.1 K
D1 1.00000000 sec
TD0 1
SFO1 400.1824711 MHz
NUC1 1H
P0 2.67 usec
P1 8.00 usec
PLW1 24.20000076 W

F2 - Processing parameters

SI 65536
SF 400.1800100 MHz
WDW EM
SSB 0
LB 0.30 Hz
GB 0
PC 1.00